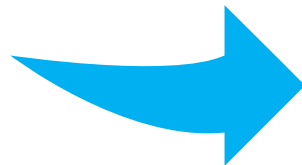


ABLAdvanced
Biological
Laboratories*Improving Disease Management*

DeepChek[®] Assay 16S rRNA Bacterial Identification V1

End-to-End Solutions for Bacterial Identification



Proprietary, ABL S.A. – May 2021

Please contact the ABL support team to request more information & registration status of the above mentioned products for your respective territories.



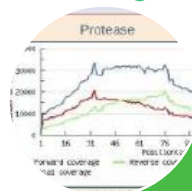
END-TO-END

MOLECULAR
DETECTION



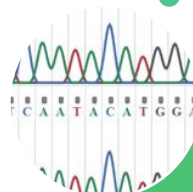
Automation

- Lab workflow/Robot
- IT
- Lab Integration



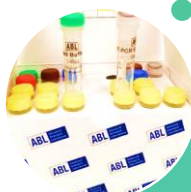
Software

- qPCR interpretation
- Genotyping interpretation



Sequencing

- Library Prep assays
- Sequencers



PCR

- qPCR instruments
- qPCR detection assays
- PCR assay



RNA/DNA Extraction

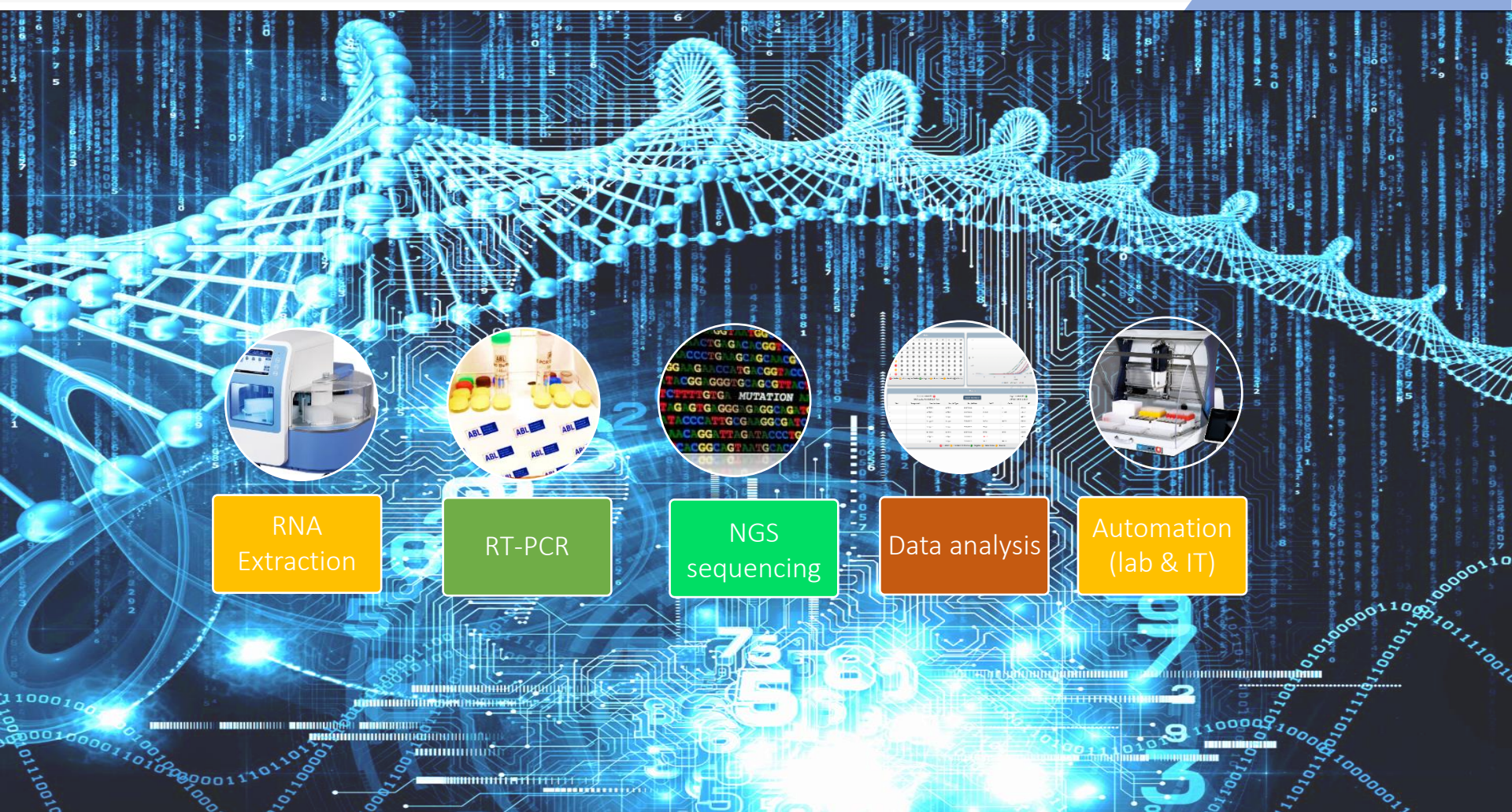
- Manual extraction
- Automatic extraction: kit + instrument



Sample collection

- Saliva collection kits
- Oro and Naso pharyngeal swabs

GENOTYPING



RNA
Extraction



RT-PCR



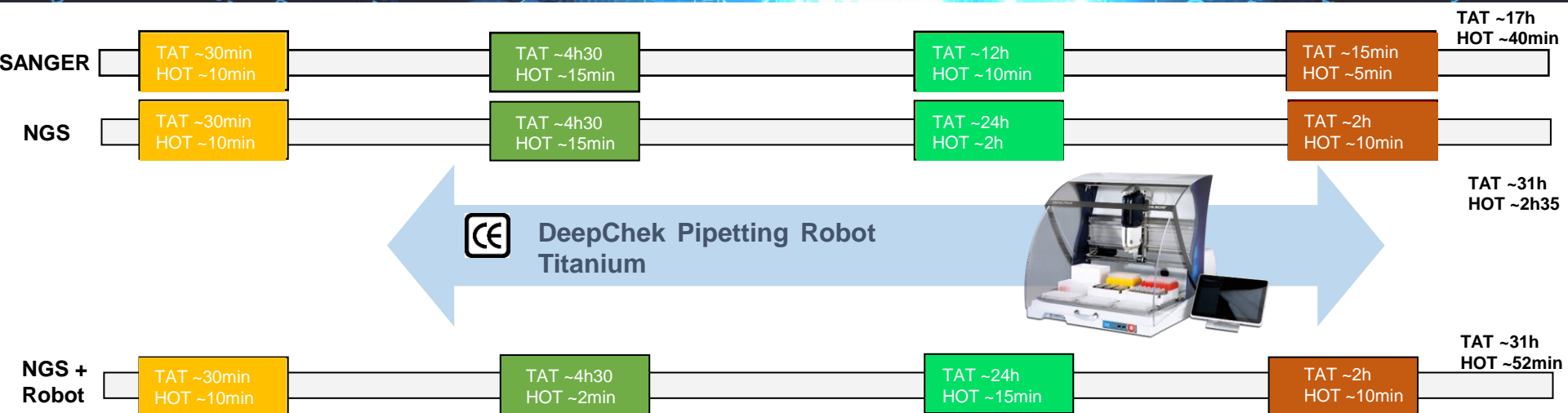
NGS
sequencing



Data analysis



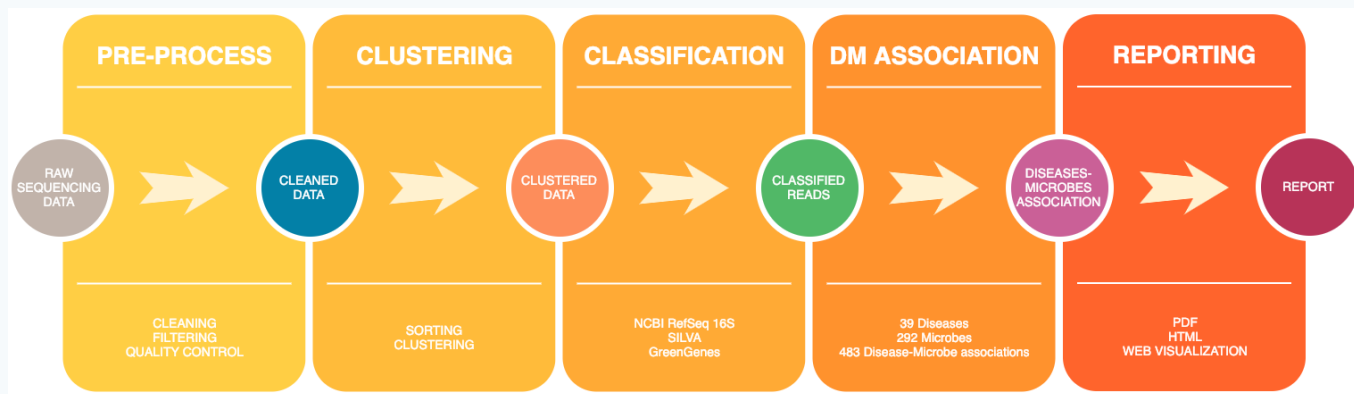
Automation
(lab & IT)



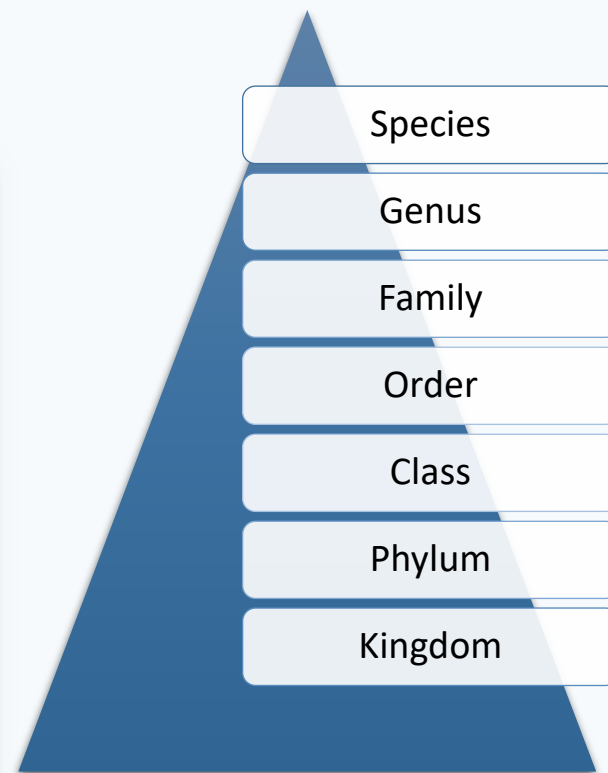
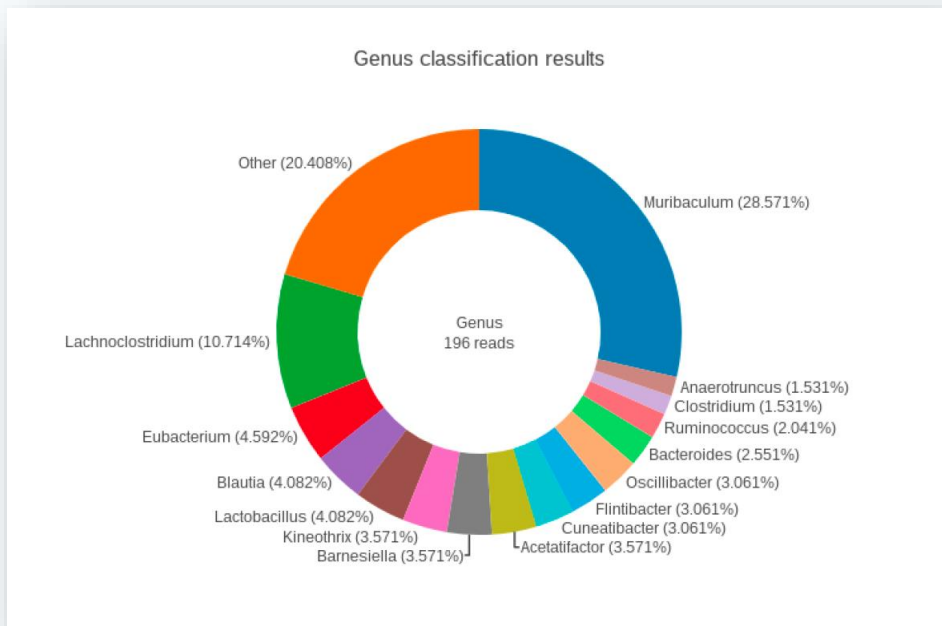
DeepChek Pipetting Robot
Titanium



MicrobioChek® Software 16s RNA Analysis



SOFTWARE



CONTACT



- Advanced Biological Laboratories S.A.
- 52-54 avenue X Septembre, 2550 Luxembourg, Luxembourg
- contact@ablsa.com
- <https://www.ablsa.com>
- TEL : (+352) 26 38 96 761
- FAX : (+352) 26 38 96 76 31