

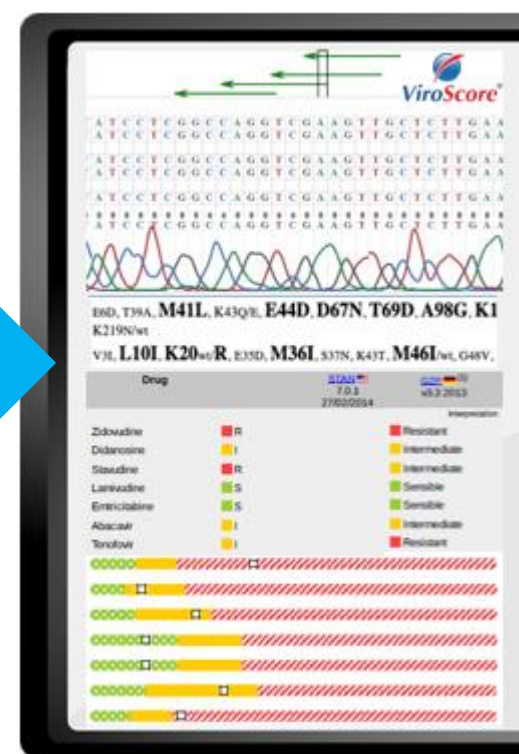
ABL

Advanced
Biological
Laboratories

Improving Disease Management

DeepChek® Assay 16S rRNA Bacterial Identification V1

End-to-End Solutions for Bacterial Identification



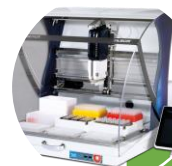
Proprietary, ABL S.A. – May 2021

Please contact the ABL support team to request more information & registration status of the above mentioned products for your respective territories.



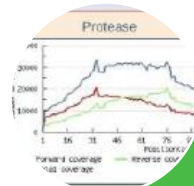
END-TO-END

MOLECULAR DETECTION



Automation

- Lab workflow/Robot
- IT
- Lab Integration



Software

- qPCR interpretation
- Genotyping interpretation



Sequencing

- Library Prep assays
- Sanger sequencing assays
- Sequencers



PCR

- qPCR instruments
- qPCR detection assays
- PCR assay



RNA/DNA Extraction

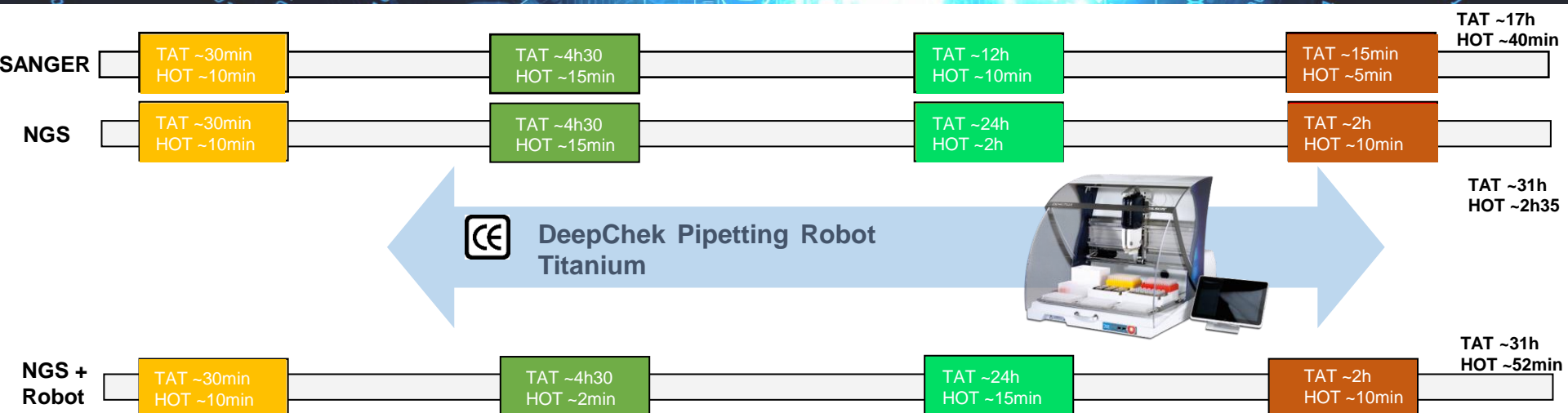
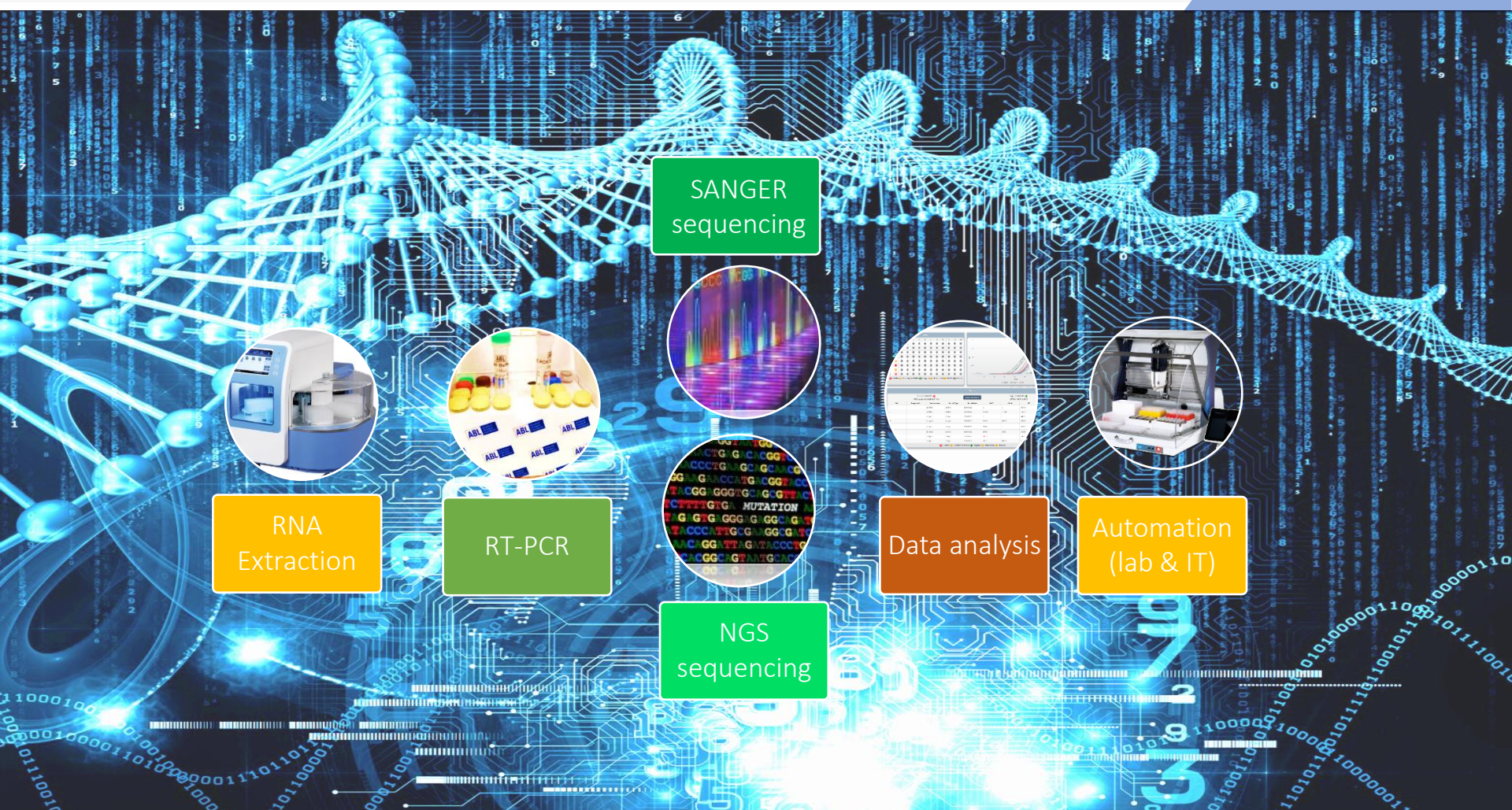
- Manual extraction
- Automatic extraction: kit + instrument



Sample collection

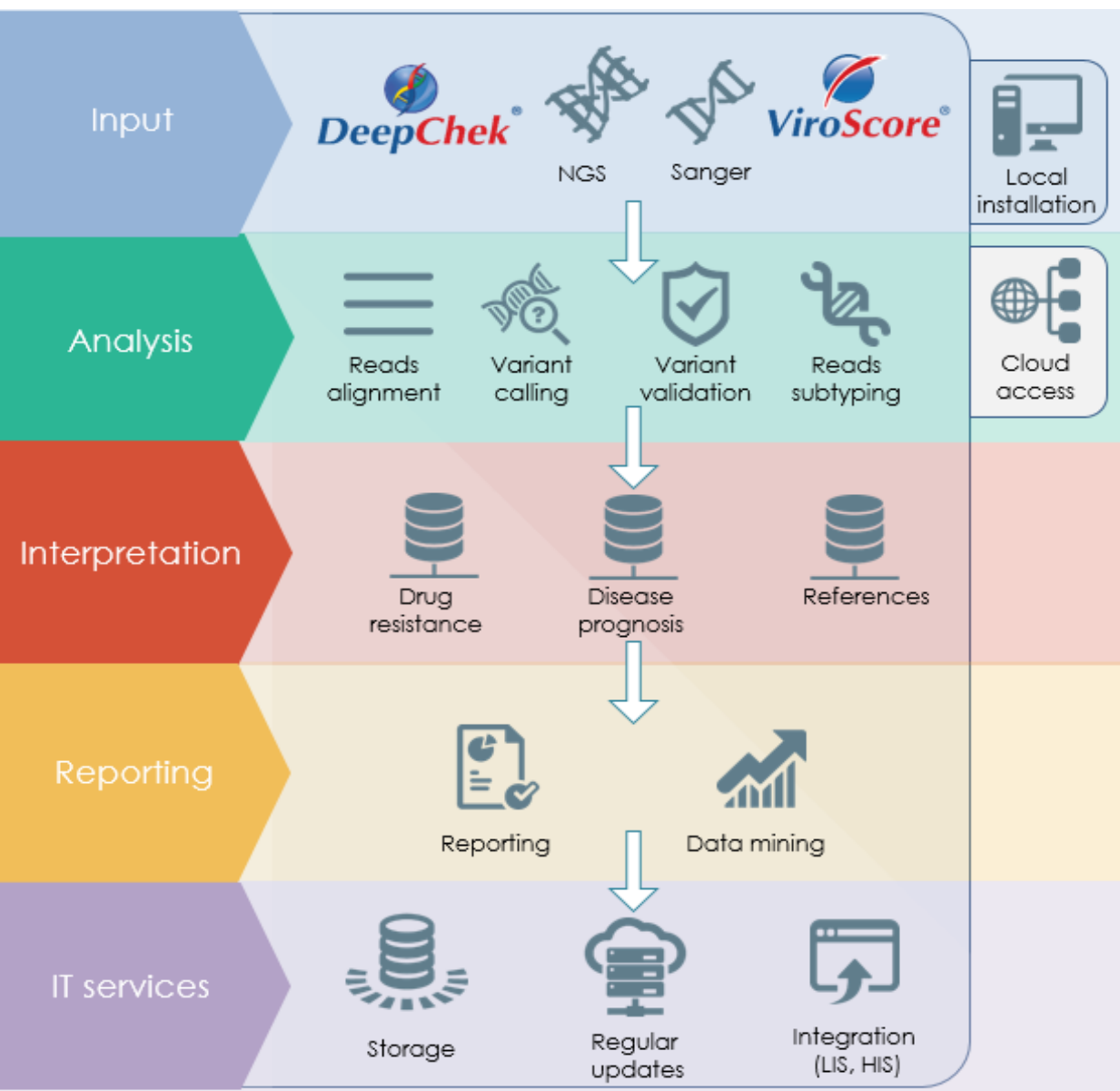
- Saliva collection kits
- Oro and Naso pharyngeal swabs

GENOTYPING





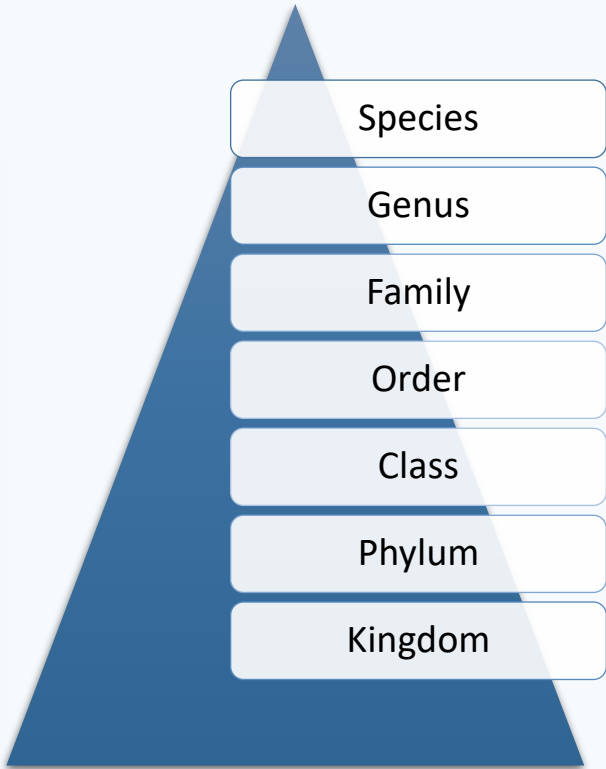
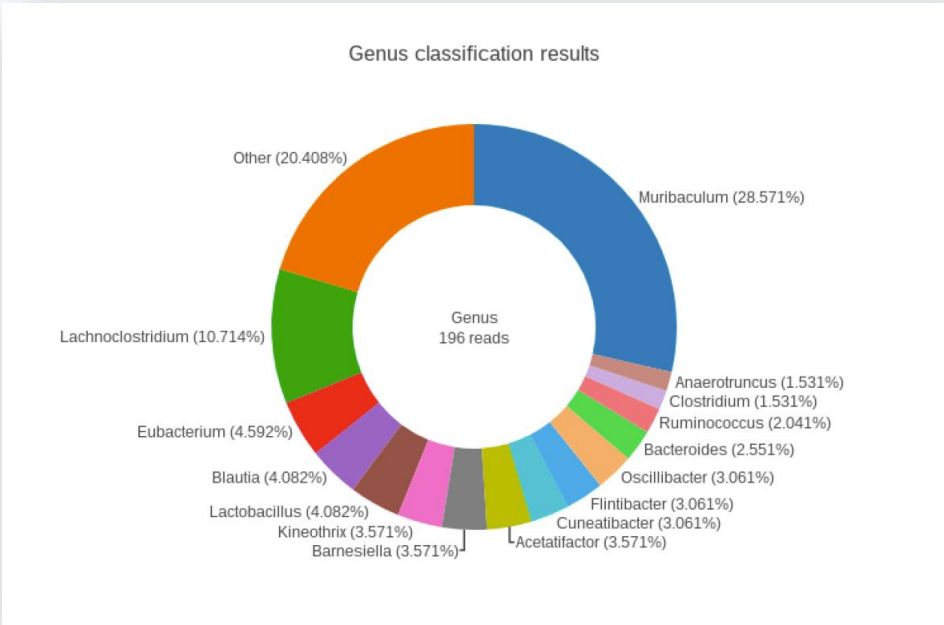
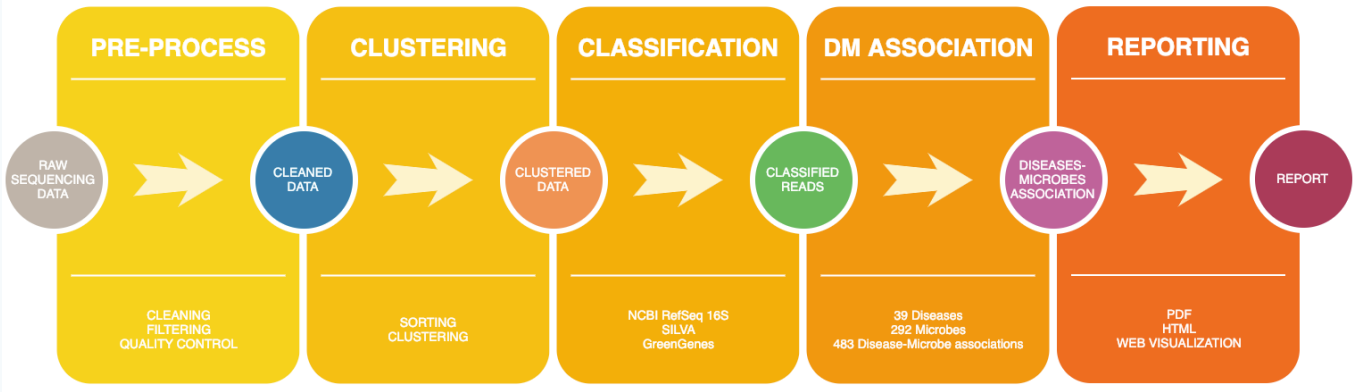
Downstream sequencing data analysis platform



- Bio-informatics analysis validated based on:
 - The application
 - The type of sequencer
- Different interpretations
 - Drug resistance
 - Tropism (HIV)
 - Vaccine escape
 - Disease prognosis
- Different reports
 - For routine use
 - For research
 - Quality reports
- Data storage capacity
 - SANGER Data
 - NGS data
 - Results
 - Reports
- An up-to-date system
 - Regular updates
 - Quarterly upgrades
 - Integration with LIS...

MicrobioChek® Software

16s RNA Analysis



CONTACT



- Advanced Biological Laboratories S.A.
- 52-54 avenue X Septembre, 2550
Luxembourg, Luxembourg
- contact@ablsa.com
- <https://www.ablsa.com>
- TEL : (+352) 26 38 96 761
- FAX : (+352) 26 38 96 76 31