

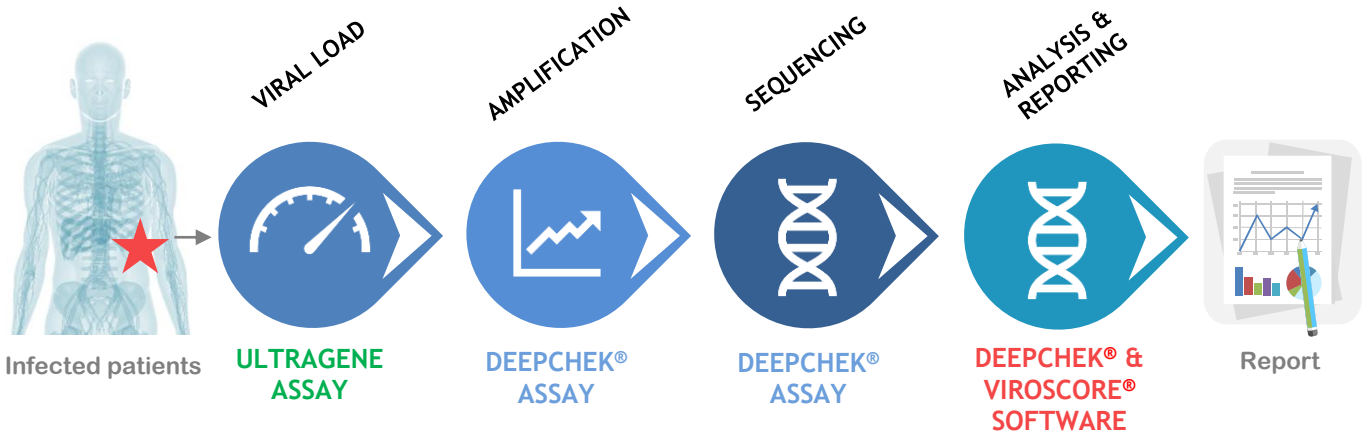
PRODUCTS OVERVIEW



- DEEPCHEK® ASSAY > GENOTYPING
- SOFTWARE > ANALYSIS & INTERPRETATION
- ULTRAGENE ASSAY > VIRAL LOAD

SOLUTIONS

TECHNOLOGY & CONCEPT



DEEPCHEK® ASSAYS AND SOFTWARE FOR HIV GENOTYPING



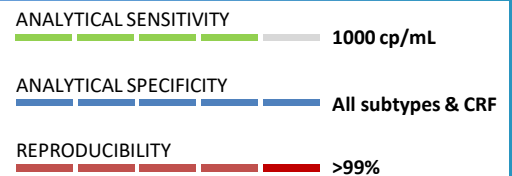
FEATURES

- For SANGER & Next Generation Sequencing (NGS)
- Compatible with any Sanger or NGS platform
- CE-IVD software
- RUO Assays – ISO-9001 manufacturing
- Automated software workflow
- Genotyping
- Drug resistance interpretation
- Reporting
- Integration / LIS connectivity
- Services (customization, data import...)



PERFORMANCES

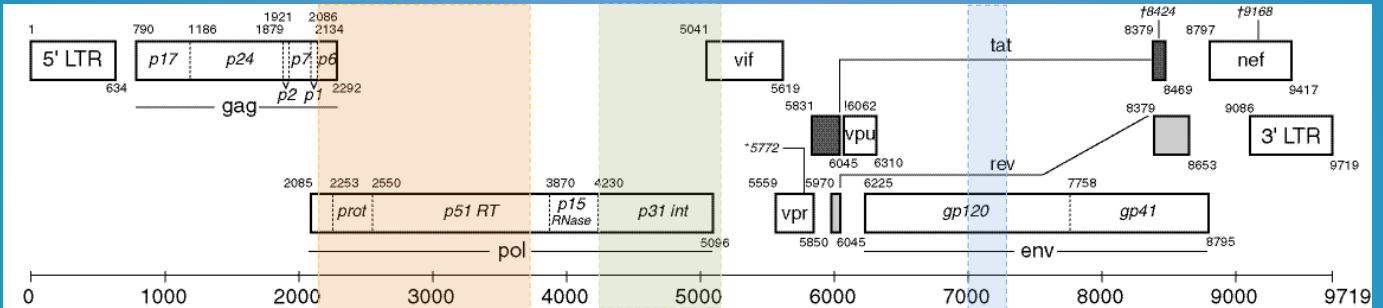
- 400 µL plasma/serum - >1000 cp/mL
- Protocols for low viral loads available
- Fully-automated bioinformatics pipeline



AVAILABLE SOON

- Robot for workflow simplification
- CE-IVD of DeepChek® Assays

DEEPCHEK®-HIV ASSAYS



GENOTYPING & DRUG RESISTANCE

- DeepChek®-HIV RT / PR Genotyping Assay (K-16-H2-RTPR24)
- DeepChek®-HIV INT Genotyping Assay (K-15-026H2-INT)

TROPISM DETERMINATION

- DeepChek®-HIV V3 Loop / Tropism Assay (Available soon)

- RT-PCR reagents: primers, enzymes...
- Nested-PCR reagents (option): primers, enzymes...
- Sanger sequencing Primers
- Protocols for Sanger and NGS
- Sanger sequencing reagents (on-demand)
- NGS Library Prep reagents (on-demand)
- Software (Sanger and NGS) included

Extraction



Extraction kit*

Amplification



Thermocycler



RT-PCR Reagents

Sequencing



Library prep kit



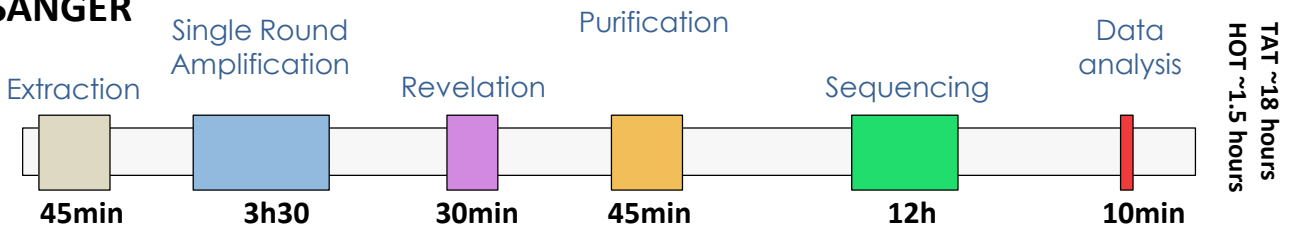
Sequencer

Data analysis

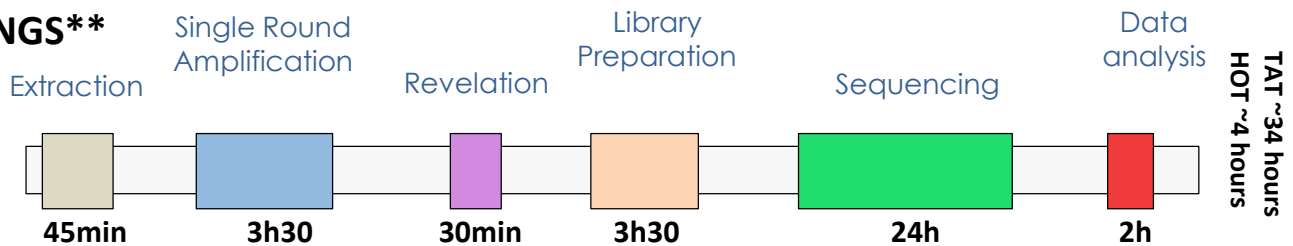


Downstream analysis software

SANGER



NGS**

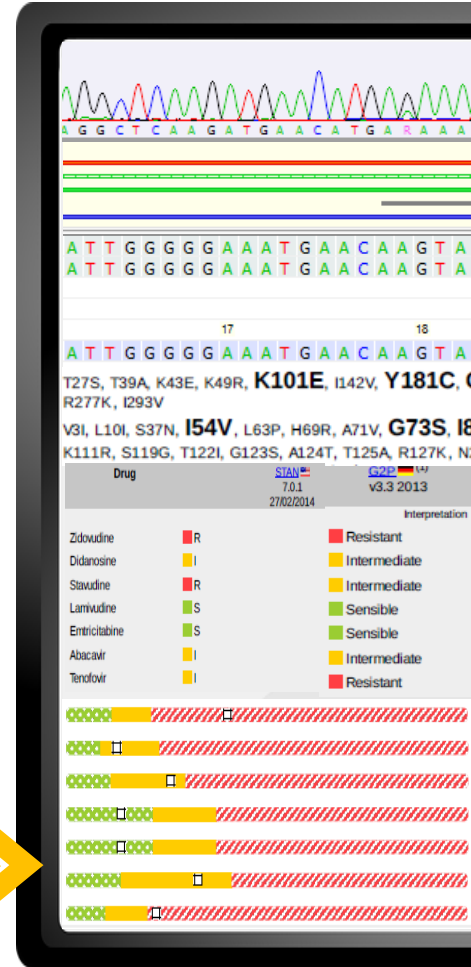
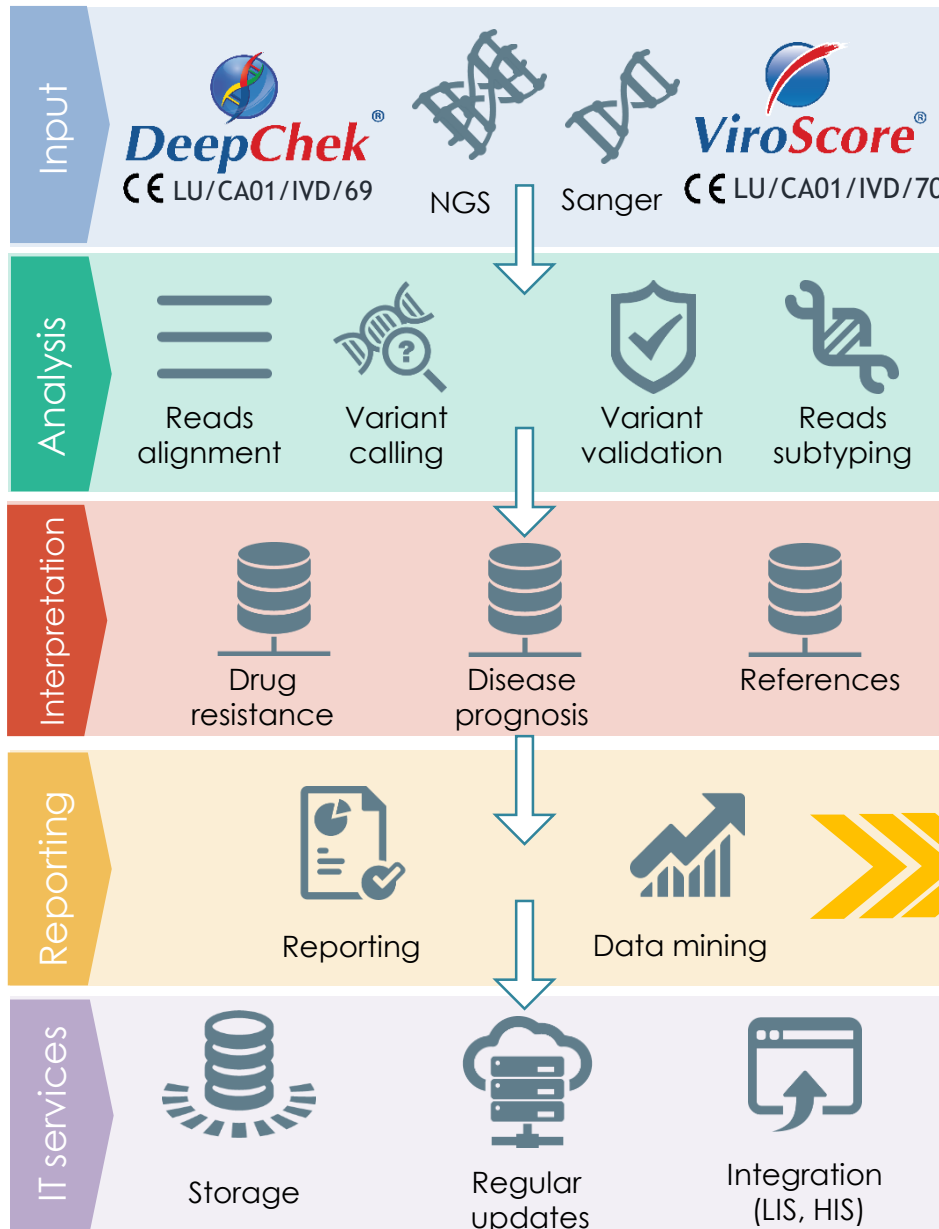


* Several protocols available

** Works on all NGS platforms (from 24 to 48 samples per run)

VIROSCORE®-HIV & DEEPCHEK®-HIV SOFTWARE

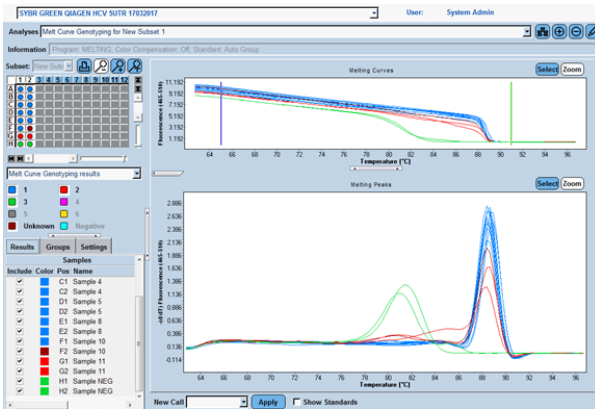
- RT, PROT, INT, GP120/V3, GP41
- Batch processing
- Inputs: AB1, FASTA, FASTQ, BAM...
- Traces assembling
- Manual or automated base calling
- Variant calling
- Genotyping/Subtyping
- Walk-away station: from chromatogram to genotyping report in <1min/sample (for Sanger)
- Drug resistance (HIVdb, ANRS, geno2pheno, ...)
- Reporting (routine diagnostics and research)
- Integration with Laboratory or Hospital Information Systems (LIS / HIS)
- Available through the Cloud or local servers



ULTRAGENE-HIV

▪ **qPCR in Disease Management**

- Real-Time PCR allows for direct detection of the amount of HIV RNA or HIV proviral DNA in the patient samples.



Negative => Viral load not detectable

Positive => Viral load > 20 cp/mL

Reflex Genotyping Testing

- ANALYTICAL SENSITIVITY** — 20 cp/mL
- ANALYTICAL SPECIFICITY** — All subtypes & CRF
- REPRODUCIBILITY** — >99%

Efficiency

Amplicons ready for sequencing:

- Genotyping, drug resistance...
- Time efficiency
- Cost efficiency
- Sample volume efficiency

CONTACT INFORMATION



- Advanced Biological Laboratories S.A.
- 17, rue des Jardiniers, L-1835 Luxembourg
- contact@ablsa.com

- <http://www.ablsa.com>
- TEL : (+352) 26 38 96 761
- FAX : (+352) 26 38 96 76 31

ORDERING INFORMATION



▪ **HIV Assays**

- DeepChek®-HIV RT / PR Genotyping Assay (RUO) K-16-H2-RTPR24
- DeepChek®-HIV INT Genotyping Assay (RUO) K-15-026H2-INT
- DeepChek®-HIV V3 Loop/Tropism Assay (RUO) To be determined
- UltraGene®-HIV Assay (RUO) To be determined

▪ **HIV Software**

- DeepChek®-HIV Software (CE-IVD) S-12-023 (HUS)
- ViroScore®-HIV / ViroScore®-HIV Premium Software (CE-IVD) S-09-014 (VSH)

ALSO AVAILABLE:

HCV, HBV

AVAILABLE SOON:

CMV, Influenza, Herpes, HPV, Tuberculosis, Microbiome