

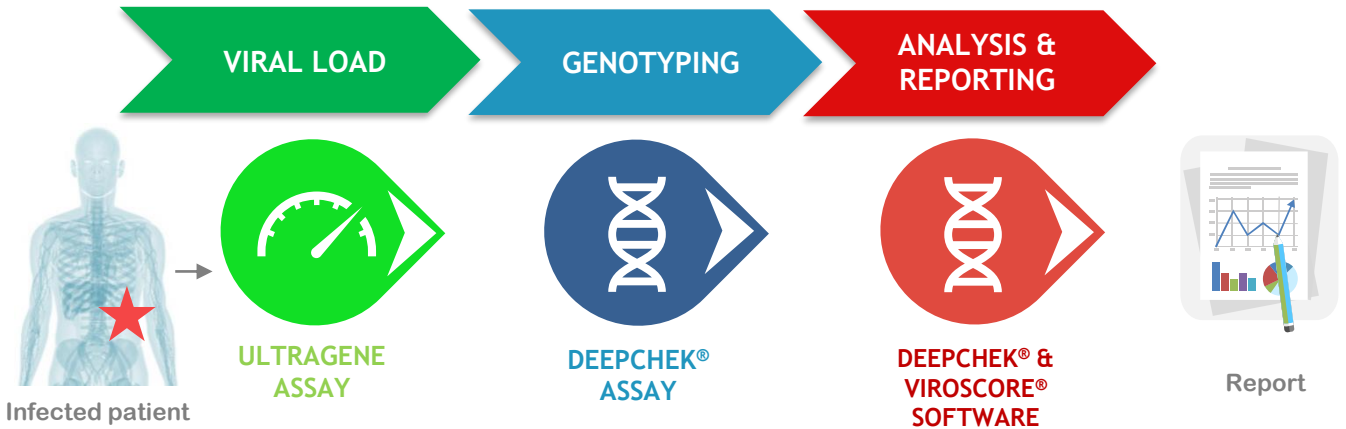
PRODUCTS OVERVIEW



- **DEEPCHEK® ASSAY** > GENOTYPING
- **SOFTWARE** > ANALYSIS & INTERPRETATION
- **ULTRAGENE ASSAY** > VIRAL LOAD

SOLUTIONS

TECHNOLOGY & CONCEPT



DEEPCHEK® ASSAYS AND SOFTWARE FOR HIV GENOTYPING



FEATURES

- For SANGER & Next Generation Sequencing (NGS)
- Compatible with any Sanger or NGS platform
- CE-IVD software
- CE-IVD Assays (RT/PR & INT) – ISO-9001 manufacturing
- Automated software workflow
- Genotyping & Tropism
- Drug resistance interpretation
- Reporting
- Integration / LIS connectivity
- Services (customization, data import...)



PERFORMANCES

- 400 µL plasma/serum - >1000 cp/mL
- Protocols for low viral loads available
- Fully-automated bioinformatics pipeline

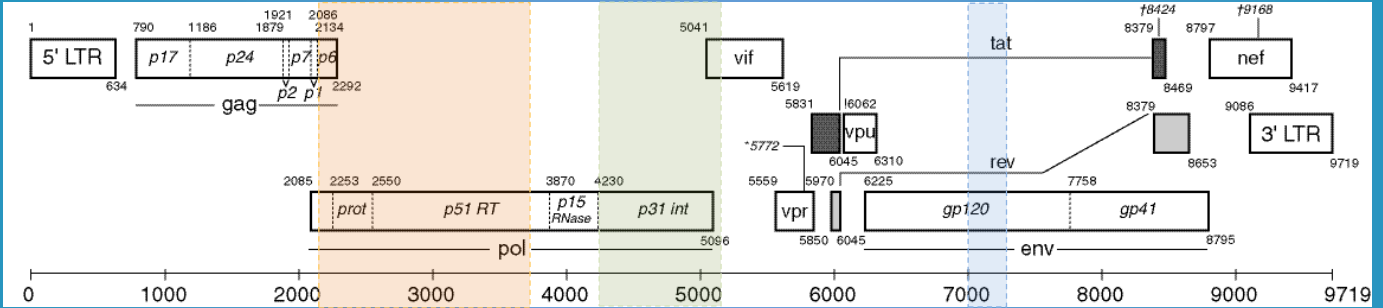
ANALYTICAL SENSITIVITY	1000 cp/mL
ANALYTICAL SPECIFICITY	All subtypes & CRF
REPRODUCIBILITY	>99%



ALSO AVAILABLE

- Robot for workflow simplification

DEEPCHEK®-HIV ASSAYS



GENOTYPING & DRUG RESISTANCE

- DeepChek®-HIV RT / PR Genotyping Assay
- DeepChek®-HIV INT Genotyping Assay

TROPISM DETERMINATION

- DeepChek®-HIV V3 Loop / Tropism Assay

- RT-PCR reagents: primers, enzymes...
- Nested-PCR reagents (option): primers, enzymes...
- Sanger sequencing Primers
- Protocols for Sanger and NGS
- Sanger sequencing reagents (on-demand)
- NGS Library Prep reagents (on-demand)
- Software (Sanger and NGS) included

Extraction



Extraction kit*

Amplification



Thermocycler



RT-PCR Reagents

Sequencing



Library prep kit



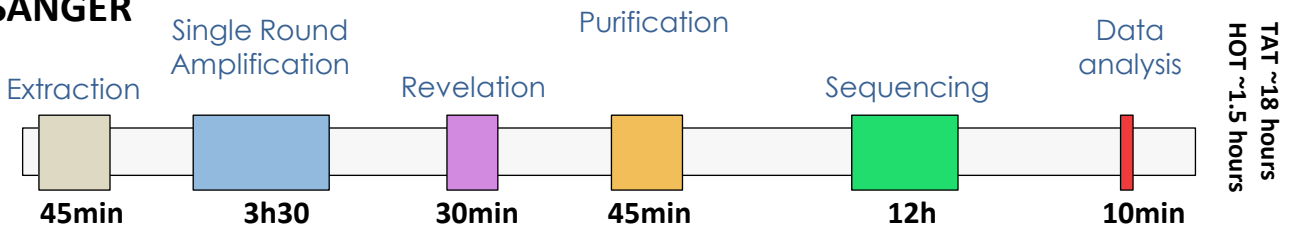
Sequencer

Data analysis

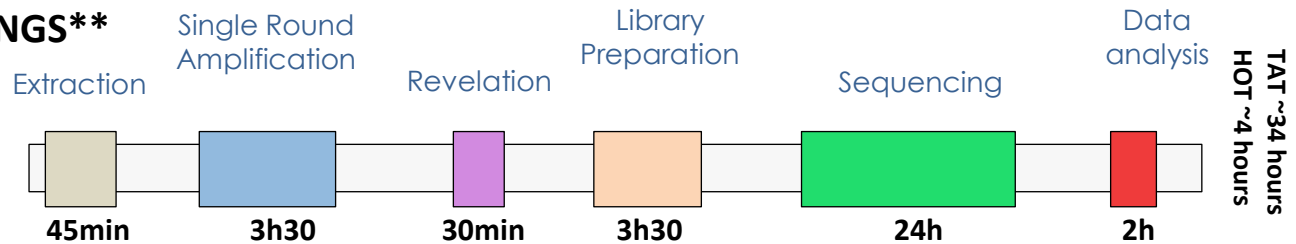


Downstream analysis software

SANGER



NGS**

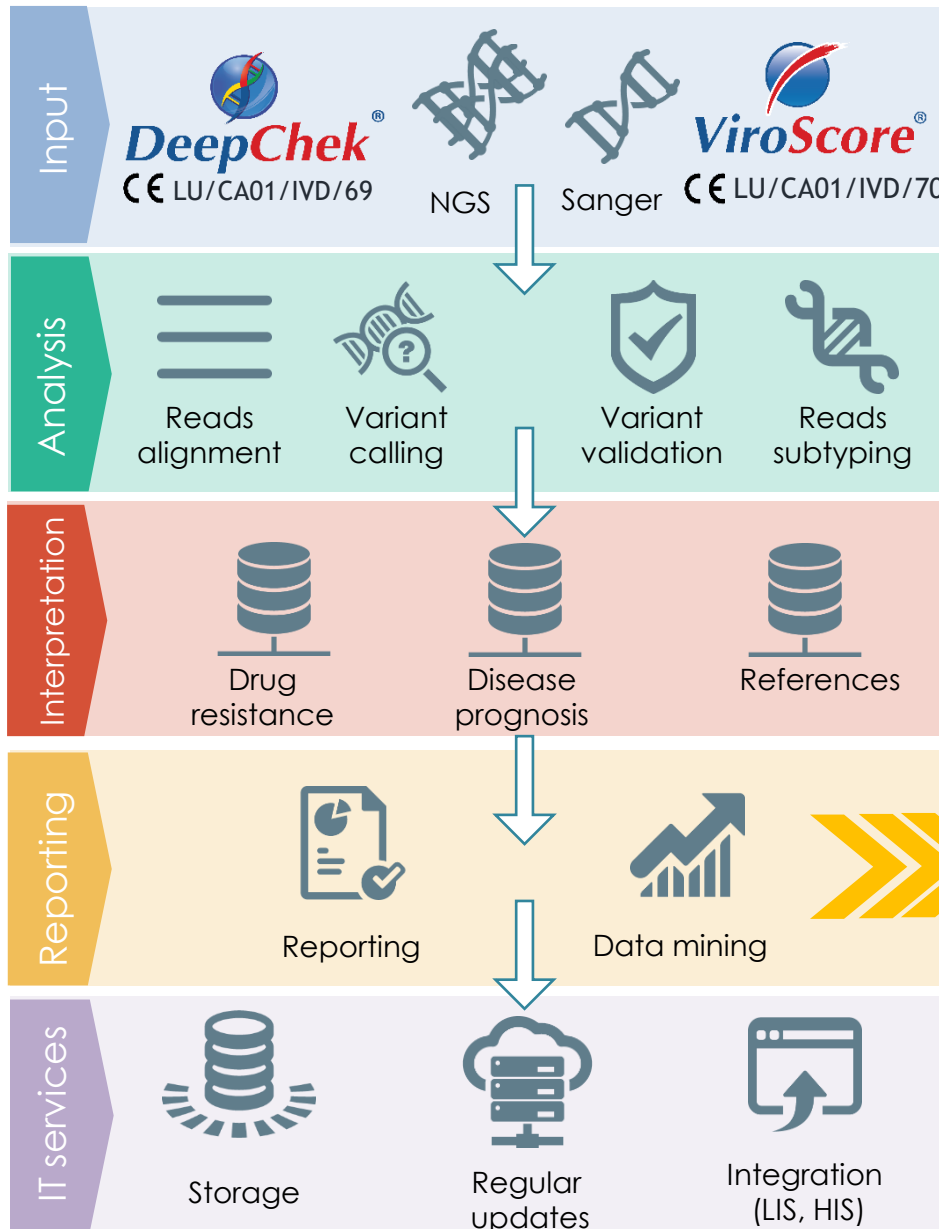


* Several protocols available

** Works on all NGS platforms (from 24 to 48 samples per run)

VIROSCORE®-HIV & DEEPCHEK®-HIV SOFTWARE

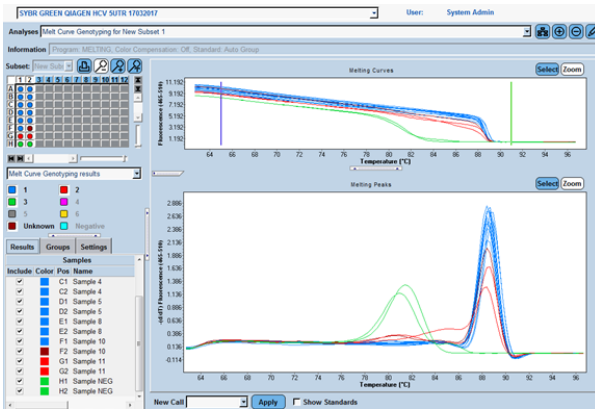
- RT, PROT, INT, GP120/V3, GP41
- Batch processing
- Inputs: AB1, FASTA, FASTQ, BAM...
- Traces assembling
- Manual or automated base calling
- Variant calling
- Genotyping/Subtyping
- Walk-away station: from chromatogram to genotyping report in <1min/sample (for Sanger)
- Drug resistance (HIVdb, ANRS, geno2pheno, ...)
- Reporting (routine diagnostics and research)
- Integration with Laboratory or Hospital Information Systems (LIS / HIS)
- Available through the Cloud or local servers



ULTRAGENE-HIV

▪ **qPCR in Disease Management**

- Real-Time PCR allows for direct detection of the amount of HIV RNA or HIV proviral DNA in the patient samples.



Negative => Viral load not detectable

Positive => Viral load > 20 cp/mL

Reflex Genotyping Testing

Efficiency

Amplicons ready for sequencing:

- Genotyping, drug resistance...
- Time efficiency
- Cost efficiency
- Sample volume efficiency

ANALYTICAL SENSITIVITY 20 cp/mL

ANALYTICAL SPECIFICITY All subtypes & CRF

REPRODUCIBILITY >99%

CONTACT INFORMATION



- Advanced Biological Laboratories S.A.
- 17, rue des Jardiniers, L-1835 Luxembourg
- contact@ablsa.com

- <http://www.ablsa.com>
- TEL : (+352) 26 38 96 761
- FAX : (+352) 26 38 96 76 31

ORDERING INFORMATION



▪ **HIV Assays**

- DeepChek®-HIV RT / PR Genotyping Assay (CE IVD) 121A24
- DeepChek®-HIV INT Genotyping Assay (CE IVD) 122A24
- DeepChek®-HIV V3 Loop/Tropism Assay (RUO) 103A24
- UltraGene®-HIV Assay (RUO) 104A24

▪ **HIV Software**

- DeepChek®-HIV Software (CE-IVD) S-12-023 (HUS)
- ViroScore®-HIV / ViroScore®-HIV Premium Software (CE-IVD) S-09-014 (VSH)

ALSO AVAILABLE:

HCV, HBV, CMV, Herpes, HPV, Tuberculosis, Microbiome, SARS-CoV-2

AVAILABLE SOON:

Influenza